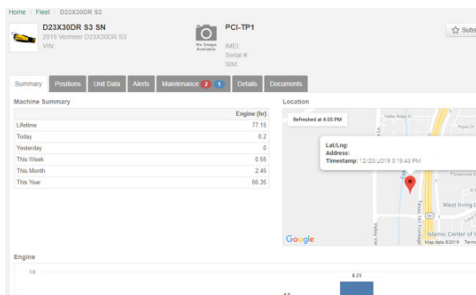
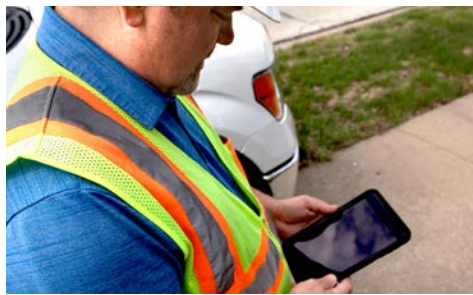


VERMEER TELEMATICS



LOCATION INFORMATION. Provides fleet or operations managers with GPS location to efficiently locate and route equipment and crews to the jobsite.



GEOFENCING. Alerts when a machine is operating outside of its expected GPS location to help keep track of your equipment even when you are miles away.



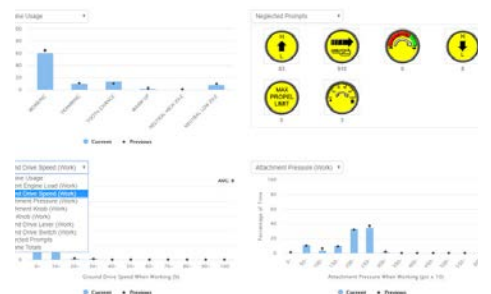
MAXIMIZE EFFICIENCY. Captures planned maintenance schedules and completed services to help maximize machine efficiency and productivity, as well as helping extend the life of the equipment.



NOTIFICATIONS. Sends notifications when planned maintenance or service needs to be performed, helping you keep your fleet in good, working condition.



HELP MANAGE OPERATING COSTS. Records both machine idle times and estimated fuel consumed to help manage operating costs.



TAKE ACTION. Turn machine-collected data into actionable information to help improve productivity on and off the machine.

Vermeer Corporation reserves the right to make changes in engineering, design and specifications; add improvements; or discontinue manufacturing at any time without notice or obligation. Equipment shown is for illustrative purposes only and may display optional accessories or components specific to their global region. Please contact your local Vermeer dealer for more information on machine availability.

Vermeer, the Vermeer logo, Equipped to Do More and ROVER are trademarks of Vermeer Manufacturing Company in the U.S. and/or other countries. © 2019 Vermeer Corporation. All Rights



**EQUIPPED TO
DO MORE.**